

Glafo

Glafo - The Glass Research Institute



...about Glafo

Glafo is a glass research institute that pursues applied research through industry-regulated research programmes and joint projects in cooperation with industry.

We also provide a comprehensive consultancy service within product and process development, product safety, durability, effectiveness, quality and environment, with respect to both acute and strategic problem solving.

We offer Scandinavia's best glass research environment, providing services within:

- research and development
- investigations
- analysis
- training
- environment

Glafo coordinates with national and international networks and knowledge centres.

Glafo is a part of SP Technical Research Institute of Sweden.





...research and development

Speciality: glass and environment aspects

- glass properties
- coloured glass
- glass decolouring
- energy balances
- recycling of glass
- glass surfaces
- glass strength
- glass development
- glass quality
- glass melting
- refinement
- interface between glass and other materials

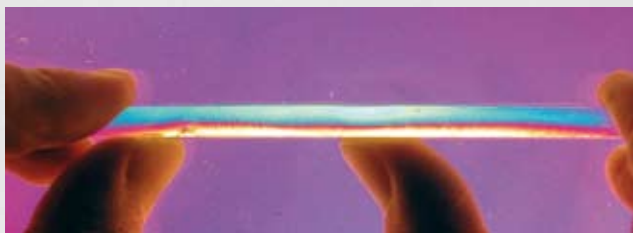
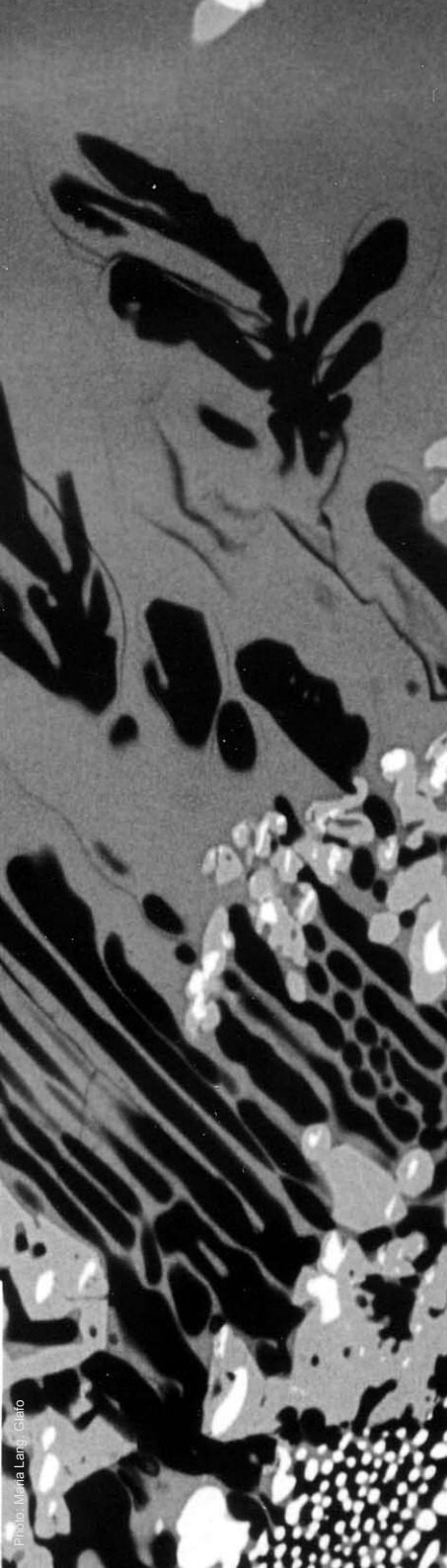




...investigations

- strength
- breakage / thermal shock
- surface damage
- recycling of glass
- environmental investigations
- dish-washing and detergents
- life cycle assessment
- stress in glass
- glass in foodstuffs
- furnace control
- energy calculations
- glass melting process
- colour measurement





...analysis

- surfaces and layers
- glass and raw materials
- defects and inclusions
- surface damage
- impurities
- material analysis
- resistance
- fake materials
- quality control of raw materials
- determination of glass properties such as transformation temperature, expansion, crystallisation etc.
- accredited chemistry laboratory specialising in glass and glass raw materials





...training

- glass technology
- compilation of training and information material
- Boken om glas (The Book about Glass) about to be published in English
- NGF, Scandinavian Society of Glass Technology
- theme days
- trade days

Prepare for the future
- invest in training

virtual
GLASS
academy

Try the first module of the Virtual Glass Academy

"Glass defects occurring while forming" was one of the modules developed in a three year pilot project within the Leonardo da Vinci programme. The aim of the project is to explore the possibilities to make a theoretical course based on practical work for glassworkers and students in different countries.

The course takes place in a partly three-dimensional model of a glass workshop with a mix of pictures, video, animations, texts and a speaker voice.

Languages:
Czech
English
Romanian
Swedish




glas





...membership

As a member of the Glass Research Association Glafo, your company gains direct access to glass expertise

Membership puts leading glass specialists at your service.

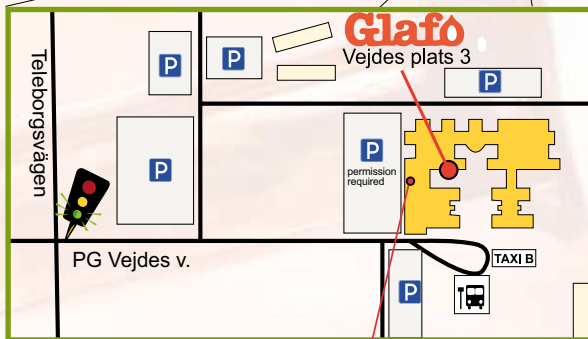
You obtain an effective springboard for faster and safer development of your company's technology. You also gain direct help with acute problem solving.

An annual research subscription is set by the members.

Benefits to members:

- 20% discount and prioritisation for consultancy services
- Opportunity to influence Glafo's research programme
- Access to Glafo's open research projects
- Discount for glass technology training
- Help with applications for external project financing
- Cost-free contact day once a year
- Cost-free short consultations
- Right to partake in joint industrial projects
- Assistance in arranging joint ventures
- Networks with other glass interested entities
- Membership letter about Glafo's research projects

Welcome!



Visitors to Glafo can register at Videum's reception and obtain free parking.

Visiting address: Vejdes plats 3, Växjö
Box 5157, SE-350 05 Växjö
Tel. +46 (0)10-516 63 50
info@glaf.se, www.glaf.se

Bus routes 5 and 7 go from the Resecentrum (Travel centre) in Växjö to the university.
Time table: www.lanstrafikenkron.se